

## Course Scenario

### Our Company

Name: Lighting Solutions and Services (LS&S)

Company Profile:

LS&S is a diversified global manufacturing and technology company that provides a wide range of products and services in the lighting market.

LS&S also manufactures innovative, high quality moving lights and digital lighting products for the professional entertainment & leisure.

### Company Overview

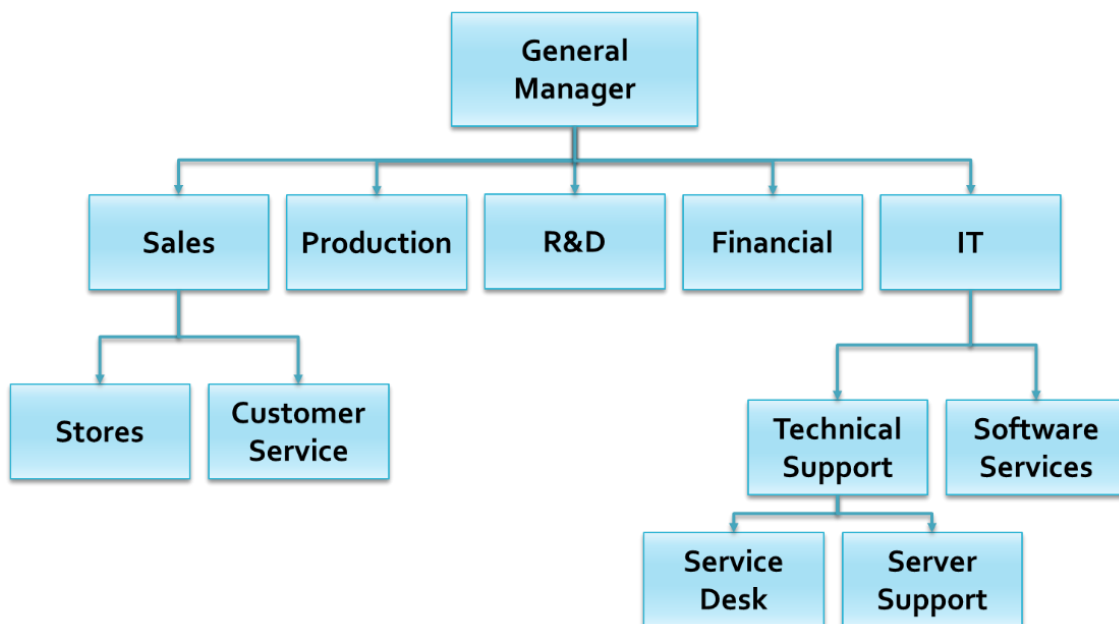
Offices:

- Sofia – HQ and Manufacturing
- Varna – Branch Office and Manufacturing
- London – Branch Office

Stores:

- 105 Stores
- 32 showrooms

### Departments Structure



### Employees

- 520 shop assistants and warehouse workers
- 260 sales consultants

- 22 quality analysts
- 300 factory workers
- 48 R&D engineers
- 12 financial accounting specialists
- 6 system administrators
- 3 software developers
- 10 managers

## **Equipment and Software**

### Equipment

- 731 workstations and laptops
- 320 printers
- 75 servers (Virtual + Physical)

### Software

- The Software Services department develops three internal software products:
  - Work process software (Desktop Application)
    - Online shop (Web Application)
    - Intranet Portal (Web Application)

## **Company Partners**

### HR Consultancy

- A company that provides HR services and outsourcing.

### Efficient Energy Solutions

- A company focused on R&D of efficient energy solutions.

## **IT requirements and goals**

- All employees should have access to company resources based on their departments and roles
- All sales consultants should have access to the corporate network no matter where they are
- All corporate data should be stored on central and secure location
- All computers in the shops and showrooms should have the same background with the company logo
- All company users should use the nearest printers and file resources
- All computers should be compliant with the latest security patches
- All important data have to be archived on a daily basis
- The company private work process software have to be installed on all company workstation and laptops
- The company intranet portal have to be a default page for all company workstations and laptops
- HR Consultancy should have access to manage employees information in LS&S
- R&D department have to have access to resources in Efficient Energy Solutions